



VC-A53

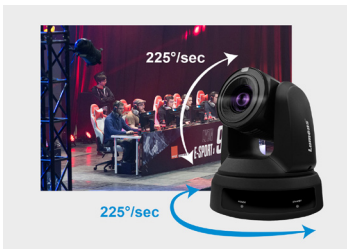
Full HD PTZ IP Camera



The VC-A53 PTZ unit combines broadcast-quality robotics and a professional imaging sensor to deliver an exceptional remote video camera. It features excellent color reproduction and low light shooting and gives users an incredible level of flexibility in terms of power, pan, tilt and zoom control and video output.

Key Features

- Professional Sony image sensor
- Supports 1080p at 60fps and versatile 20x optical zoom
- Delivers HD video output via Ethernet, HDMI, USB and 3G-SDI simultaneously
- 5-year warranty*



Professional High Speed Robotics

With high-precision motors, the VC-A53 can run at up-to 225° per second for very fast movement between preset positions. The unit is also able to move at low speed to deliver smooth and judder-free tracking shots.



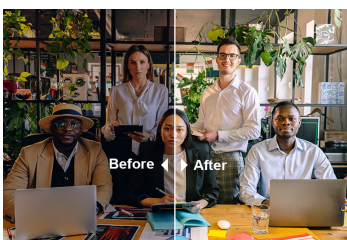
Networking Built-in

The VC-A53's Ethernet port is truly multi-purpose. It supports power over Ethernet, video streaming in a variety of secure and broadcast standard formats, and IP control. Users can remotely control multiple units and manage their cameras facility-wide using the complimentary Lumens Deployment Tool 2.0.



Production Ready

The VC-A53 is based around a professional Sony sensor, making the video output easy to integrate into mixed camera productions. The unit can be controlled using RS-232, RS-422, USB and Ethernet control interfaces enabling users to add the camera into existing workflows.



Intelligent Auto

VC-A53 offers full manual settings to give producers full creative control. The camera also incorporates intelligent automatic modes that deliver exceptional auto-focus, predictive auto-exposure and auto-white balance. These features allow users to trust the camera to run without user-input and to deliver consistently professional results.

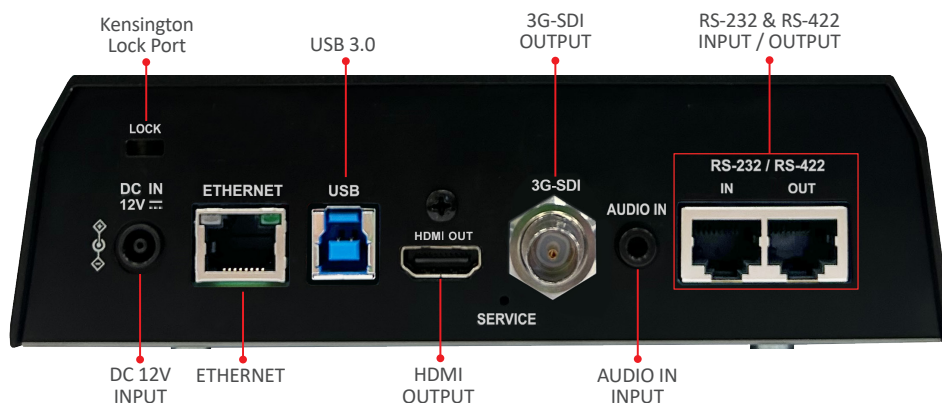


Product Specifications

PTZ Camera	
Sensor	1/2.8" 2.16 MP CMOS
Video Format	1080p : 60 / 50 / 30 / 25 720p : 60 / 50 / 30
Video Output (HD) Interface	3G-SDI / HDMI / Ethernet / USB3.0
Optical Zoom	20x
Digital Zoom	12x
Horizontal Viewing Angle	57°
Vertical Viewing Angle	32.1°
Diagonal Viewing Angle	65.4°
Aperture	F1.6~F3.8
Focal Length	5.33mm~110mm
Shutter Speed	1/1 ~ 1/10,000 sec
Minimum Object Distance	Wide: 0.5M / Tele: 1.5M
Video S / N Ratio	> 50dB
Minimum Illumination	1.0 lux (F1.6, 50IRE, 30fps)
Focus System	Auto / Manual / Smart AF
Gain Control	Auto / Manual
White Balance	Auto / Manual
Exposure Control	Auto / Manual
WDR	Yes
3D NR	Yes
Image Flip	Yes
AR / VR Systems	FreeD
Tally Light	Yes
Pan & Tilt	
Panning Angle	+170° ~ 170°
Panning Speed	225°/sec
Tilting Angle	+90° ~ -30°
Tilting Speed	225°/sec
Preset Positions	256

Output	
HDMI / 3G-SDI	1080p 60
IP Stream	Main : H.264 1080p 60 Second : H.264 640x360p 30 Webpage Preview: 1280x720 30
IP Compression	H.264
USB Output	1080p 60
USB Compression	H.264 / MJPEG
Network	
IP Protocol	RTSP / RTMP / RTMPS / MPEG-TS / SRT
PoE	PoE (IEEE802.3af)
Audio	
Input	Line In / MIC In
Output	Ethernet / USB 3.0 / HDMI / SDI
Compression Format	AAC / PCM
Camera Control	
Interface	RS-232 / RS-422 / Ethernet / USB / Remote
Protocol	VISCA / VISCAIP / ONVIF
UVC	1.1
UAC	Yes
General	
DC In	12V +/- 20%
Power Consumption	PoE : 10W DC In : 9W
Weight	2 kg (4.4 lbs)
Dimension (WxHxD)	6.85" x 7.76" x 7.09" (174 x 197 x 180 mm)

I/O Connections



Lumens®

Lumens Integration, Inc.
4116 Clipper Court
Fremont, CA, 94538
Phone: +1-866-600-0988
Fax: +1-510-252-1389

Lumens Europe
De Nayerstraat 17 9470
Denderleeuw Belgium
Phone: +32-473-58-38-95
Fax: +32-2-452-76-00



www.MyLumens.com